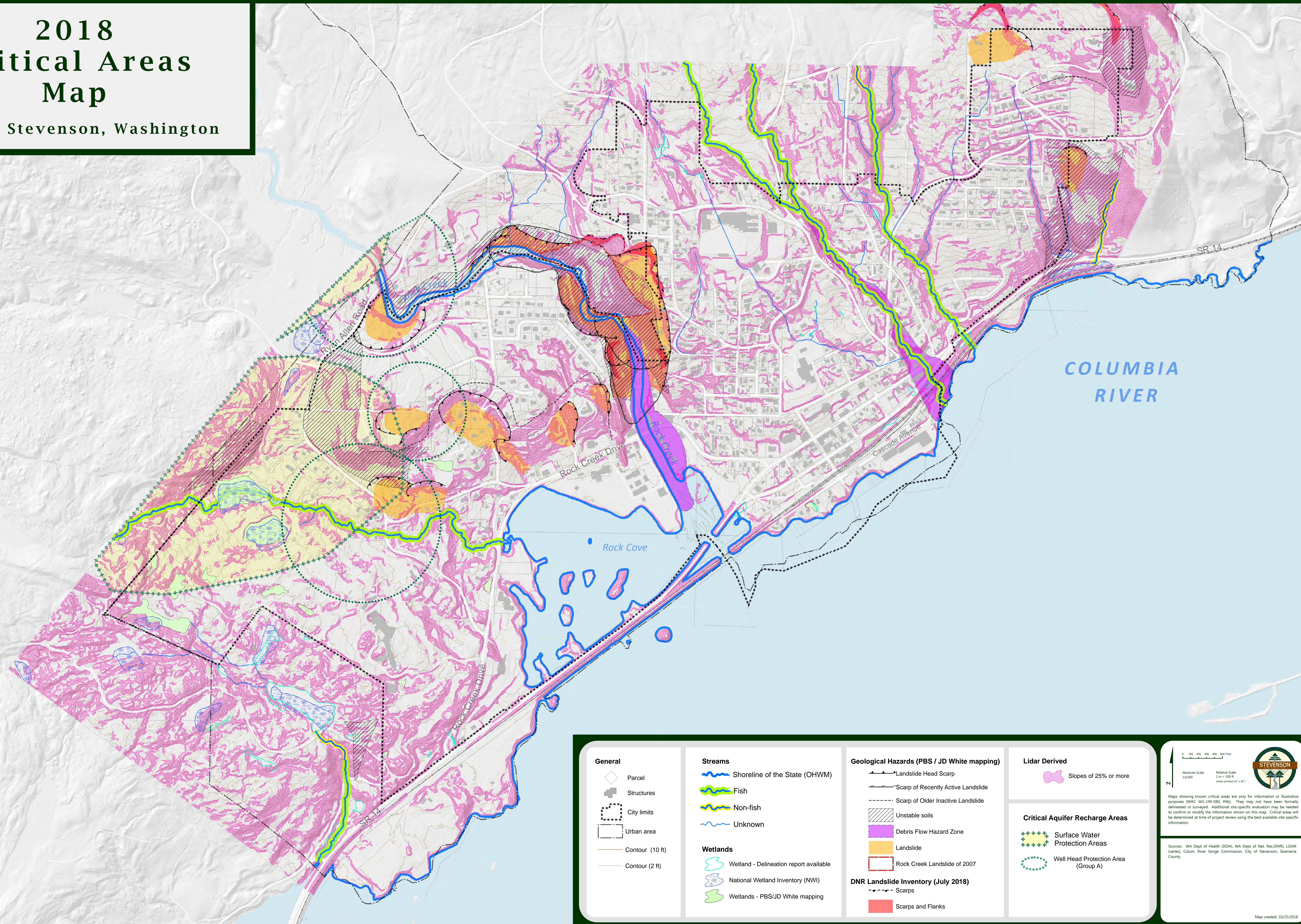


2018 Critical Areas Map

City of Stevenson, Washington



<p>General</p> <ul style="list-style-type: none"> Parcel Structures City limits Urban area Contour (10 ft) Contour (2 ft) 	<p>Streams</p> <ul style="list-style-type: none"> Shoreline of the State (OHWM) Fish Non-fish Unknown <p>Wetlands</p> <ul style="list-style-type: none"> Wetland - Delineation report available National Wetland Inventory (NWI) Wetlands - PBS/JD White mapping 	<p>Geological Hazards (PBS / JD White mapping)</p> <ul style="list-style-type: none"> Landslide Head Scarp Scarp of Recently Active Landslide Scarp of Older Inactive Landslide Unstable soils Debris Flow Hazard Zone Landslide Rock Creek Landslide of 2007 <p>DNR Landslide Inventory (July 2018)</p> <ul style="list-style-type: none"> Scarps Scarps and Flanks 	<p>Lidar Derived</p> <ul style="list-style-type: none"> Slopes of 25% or more <p>Critical Aquifer Recharge Areas</p> <ul style="list-style-type: none"> Surface Water Protection Areas Well Head Protection Area (Group A) 	<p>0 100 200 300 400 500 Feet</p> <p>Absolute Scale: 1:6,000 Relative Scale: 1 in = 500 ft (when printed 24" x 36")</p> <p>Map showing known critical areas are only for information or illustrative purposes (WAC 365-130-080, #402). They may not have been formally delineated or surveyed. Additional site-specific evaluation may be needed to confirm or modify the information shown on this map. Critical areas will be determined at time of project review using the best available site-specific information.</p> <p>Sources: WA Dept of Health (DOH), WA Dept of Nat. Res.(DNR), LIDAR (varies), Colum. River Gorge Commission, City of Stevenson, Skamania County</p> <p>Map created: 10/25/2018</p>
--	---	---	---	---