

# Skamania Courthouse Plaza

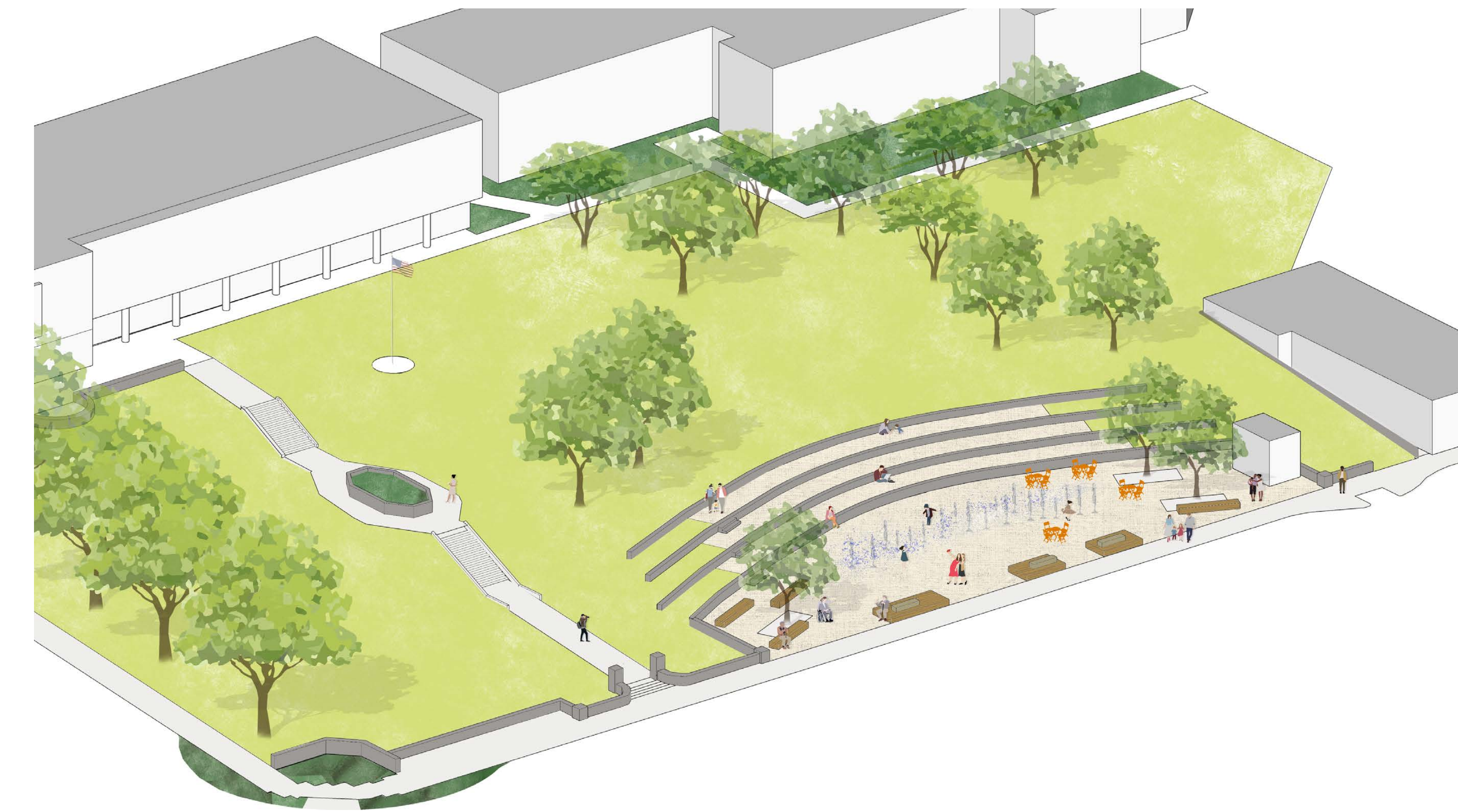
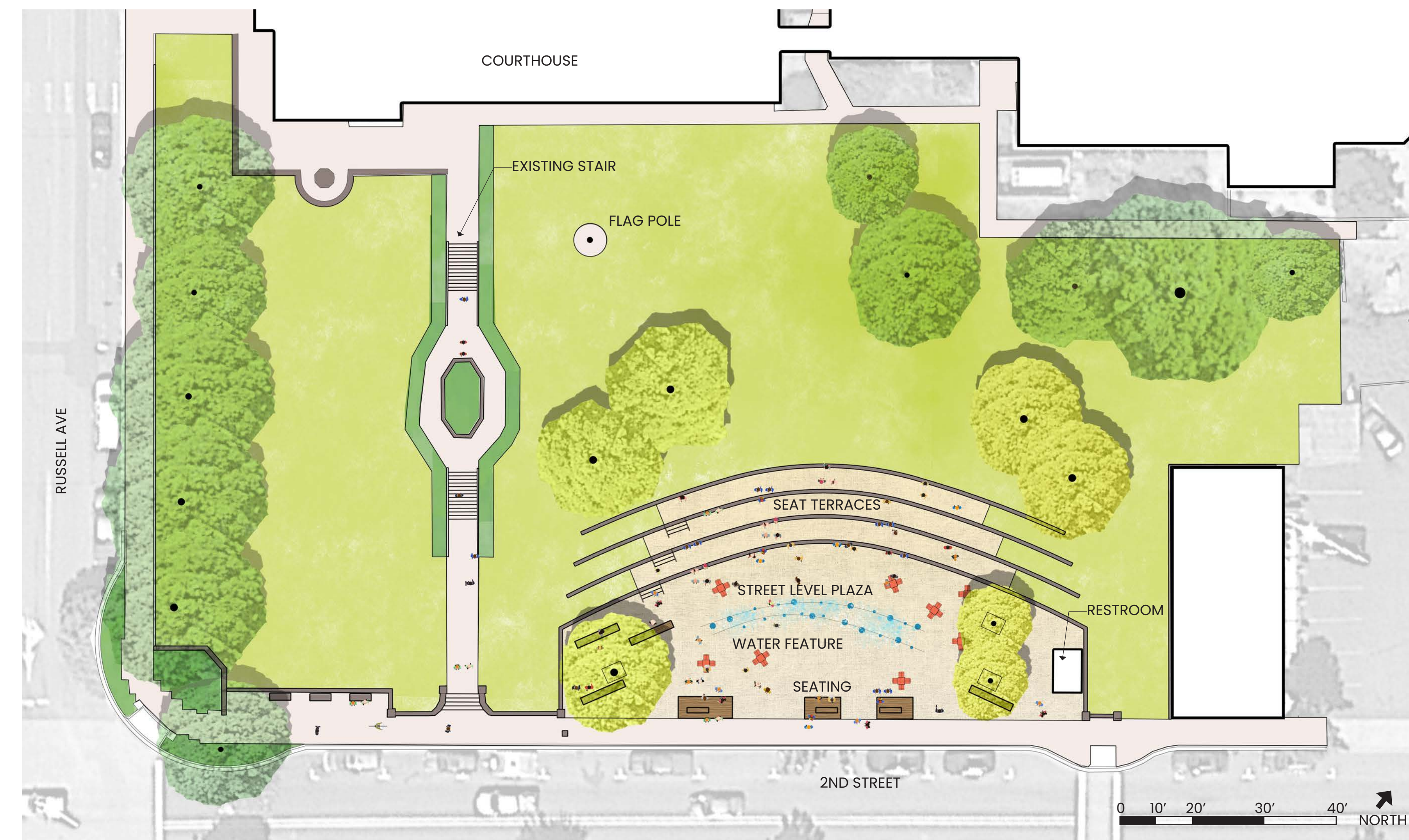
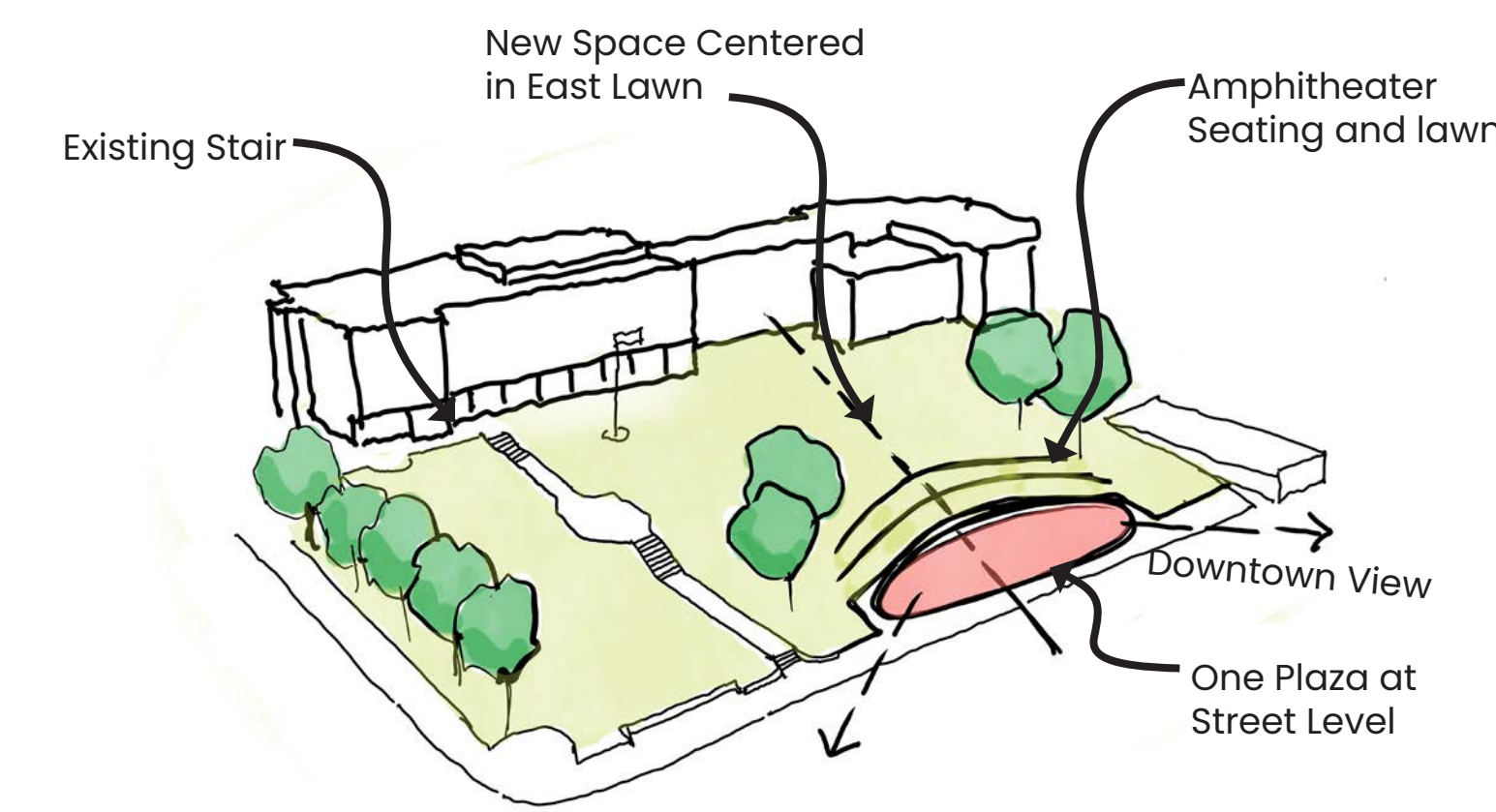
The vision to create a public plaza in downtown Stevenson was developed during a 2012 planning process led by the City of Stevenson to identify ways to improve the downtown. In 2016 the Stevenson Downtown Association led a community design process to create a design concept for the new plaza. The 2016 preferred design, *Looking to the Future*, was aspirational and intended to build momentum for the project and fundraise for future design and construction. The cost estimate for *Looking to the Future* is estimated at \$8.5 Million. The current construction budget for the plaza is \$3.2 Million. The proposed design concepts shown below incorporate priorities and themes identified in 2016 and are refined to meet the current construction budget.



The future plaza is envisioned as a vibrant community gathering place celebrating the natural beauty of the Columbia River Gorge and the history of Stevenson. An interactive water feature in each concept references the historic Cascades rapids and provides opportunities for play. Each concept has multiple places to gather including built-in wood seating inspired by the timber history of the region and movable seating.

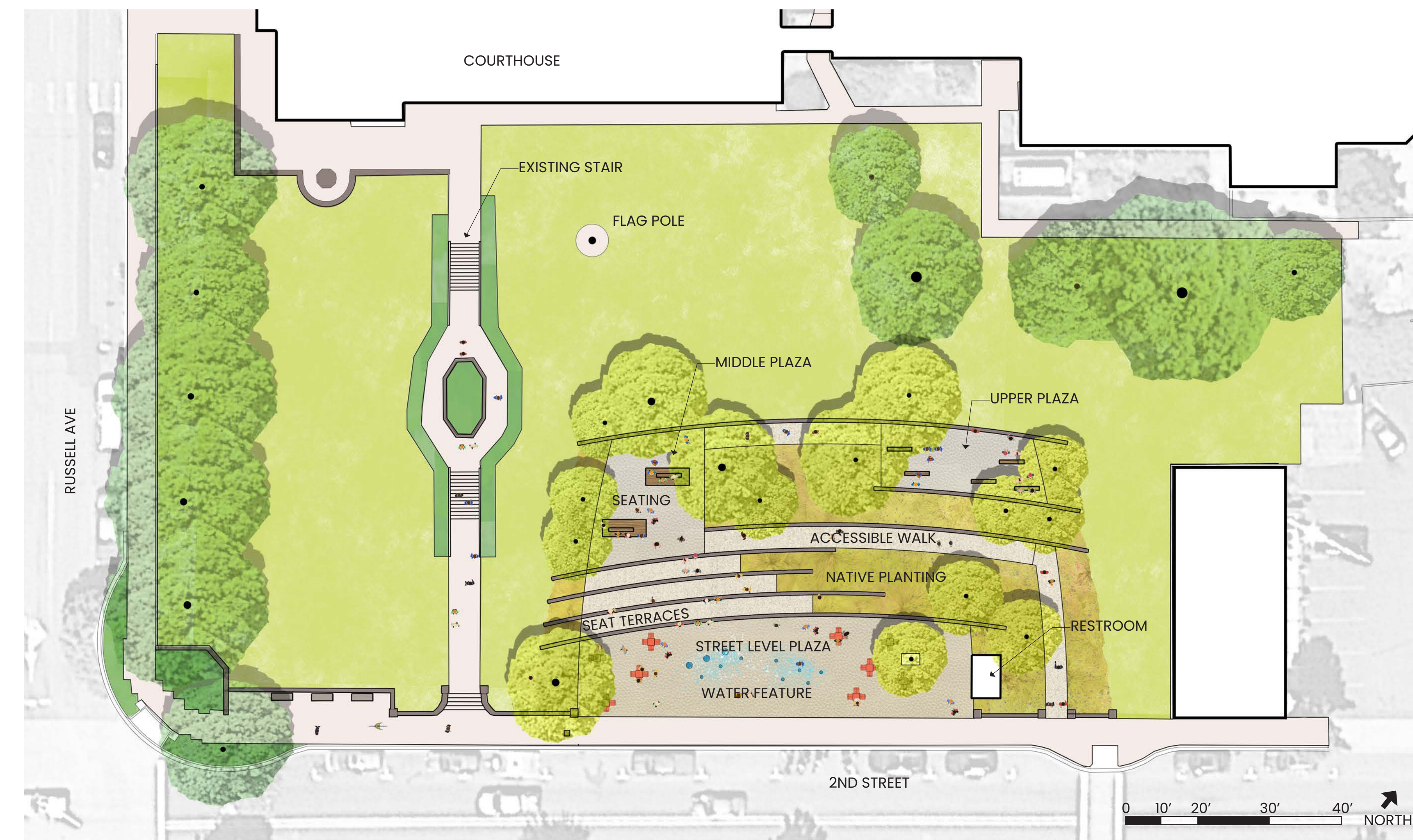
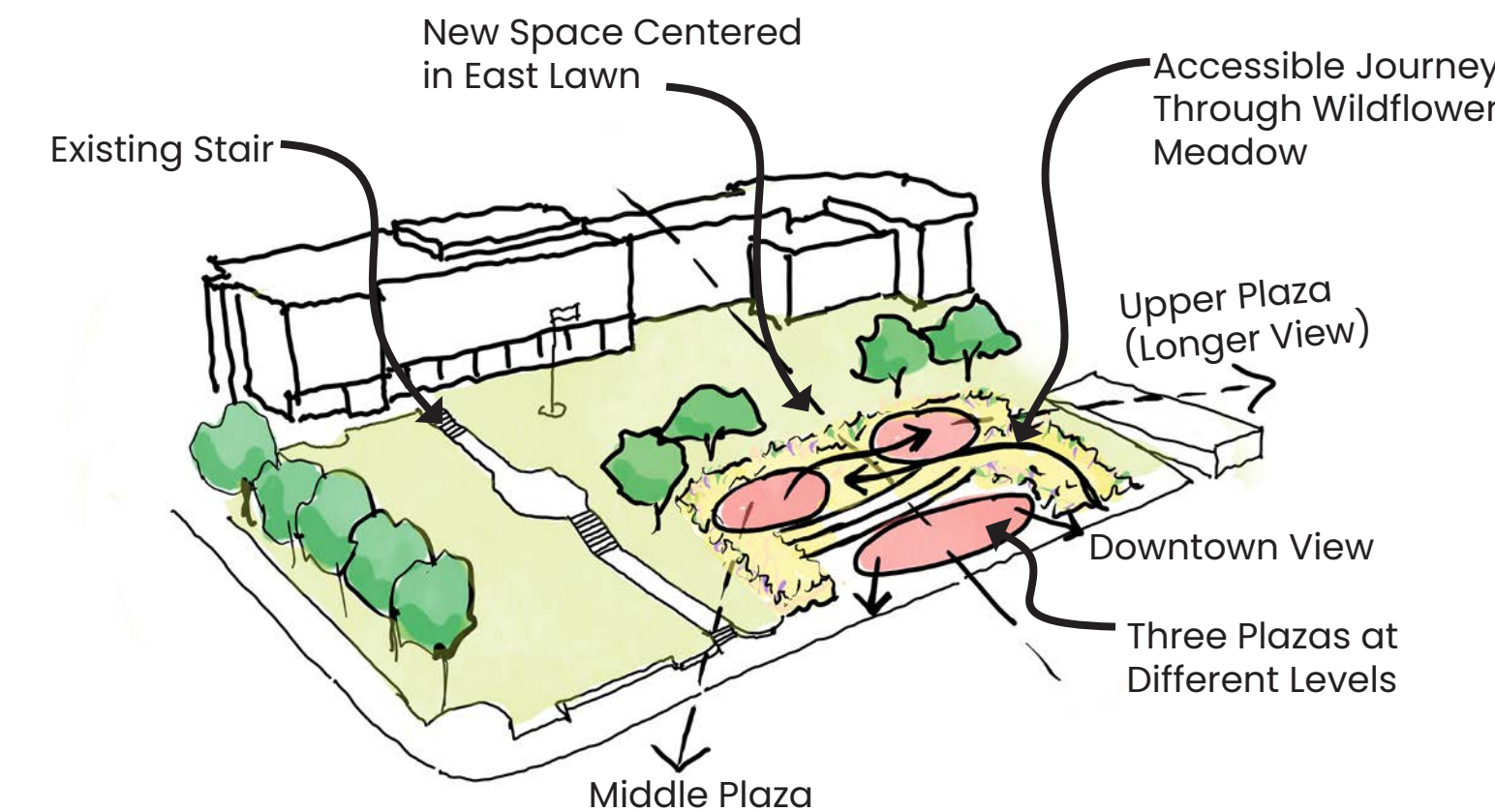
## Community Lawn

The Community Lawn concept maintains the existing character of the site as an open flexible lawn space with one large plaza at street level and seat-height amphitheater terraces integrated with the sloped lawn. This option preserves the existing stair to the courthouse and centers the plaza in the lawn east of the stair. For everyday use, shade trees in the plaza provide comfortable places for gathering and the amphitheater seat steps provide opportunities for sitting in the sun. The water feature can be turned off to set up small market-type events in the plaza or to create space for a performance stage at the base of the amphitheater terraces.



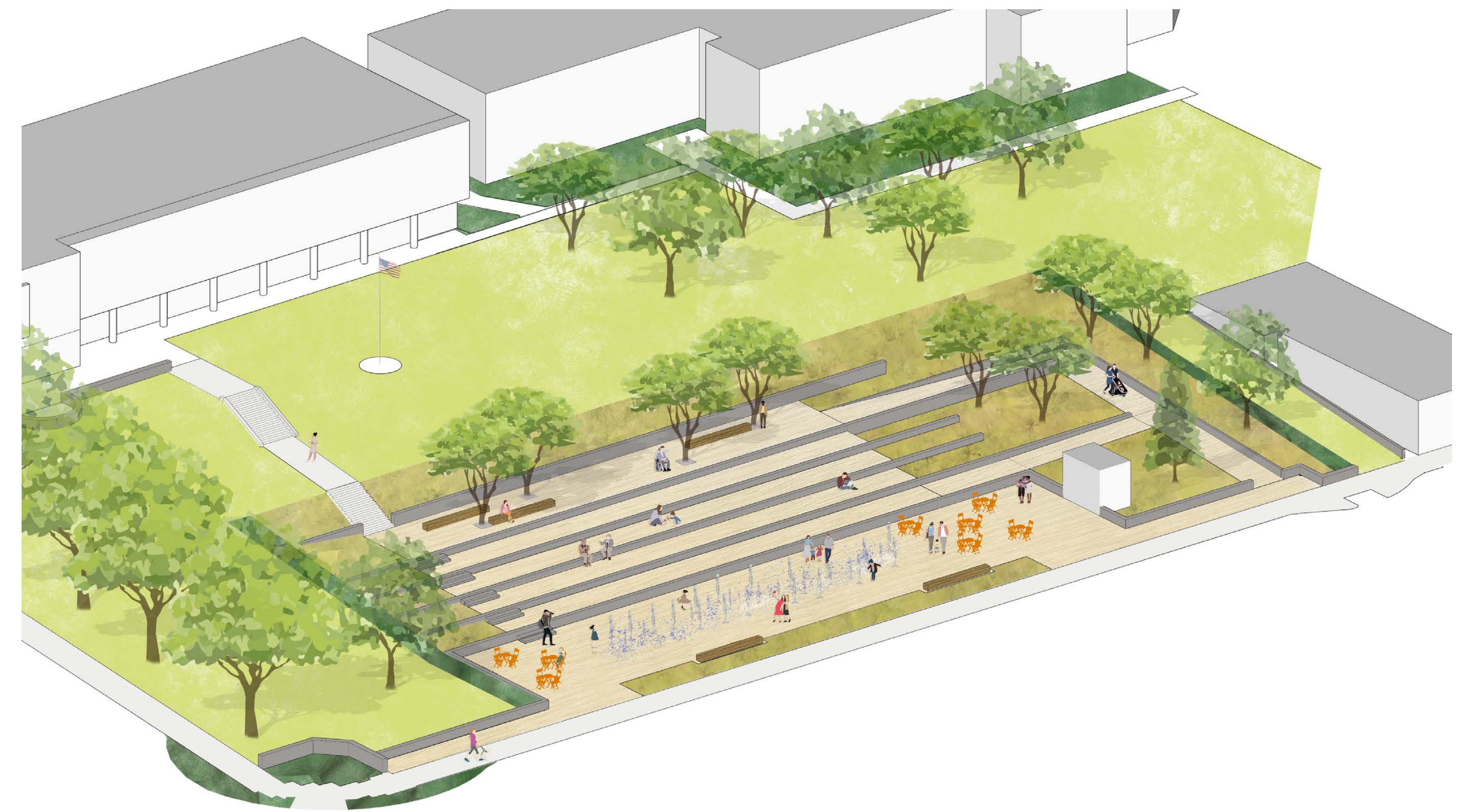
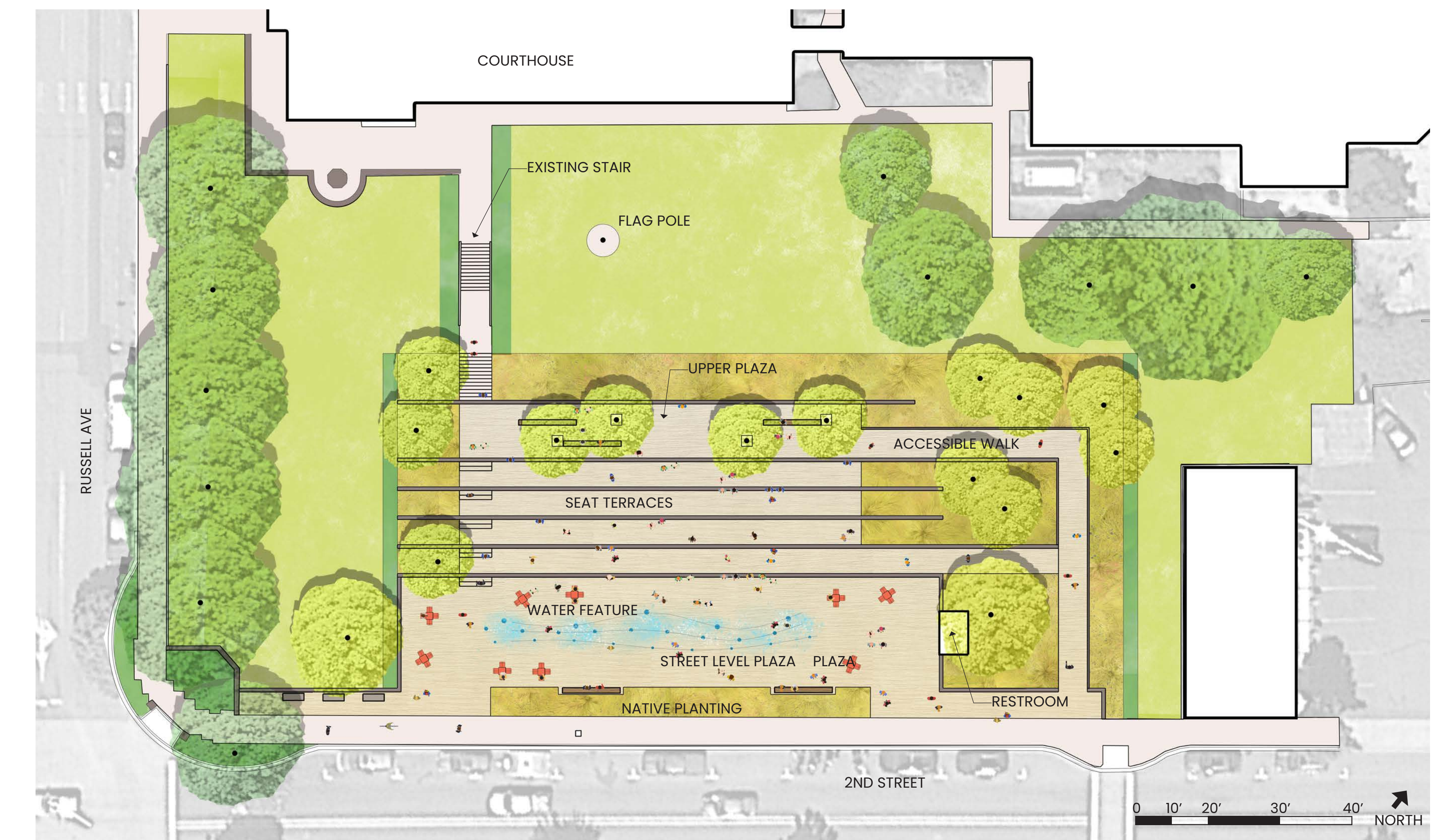
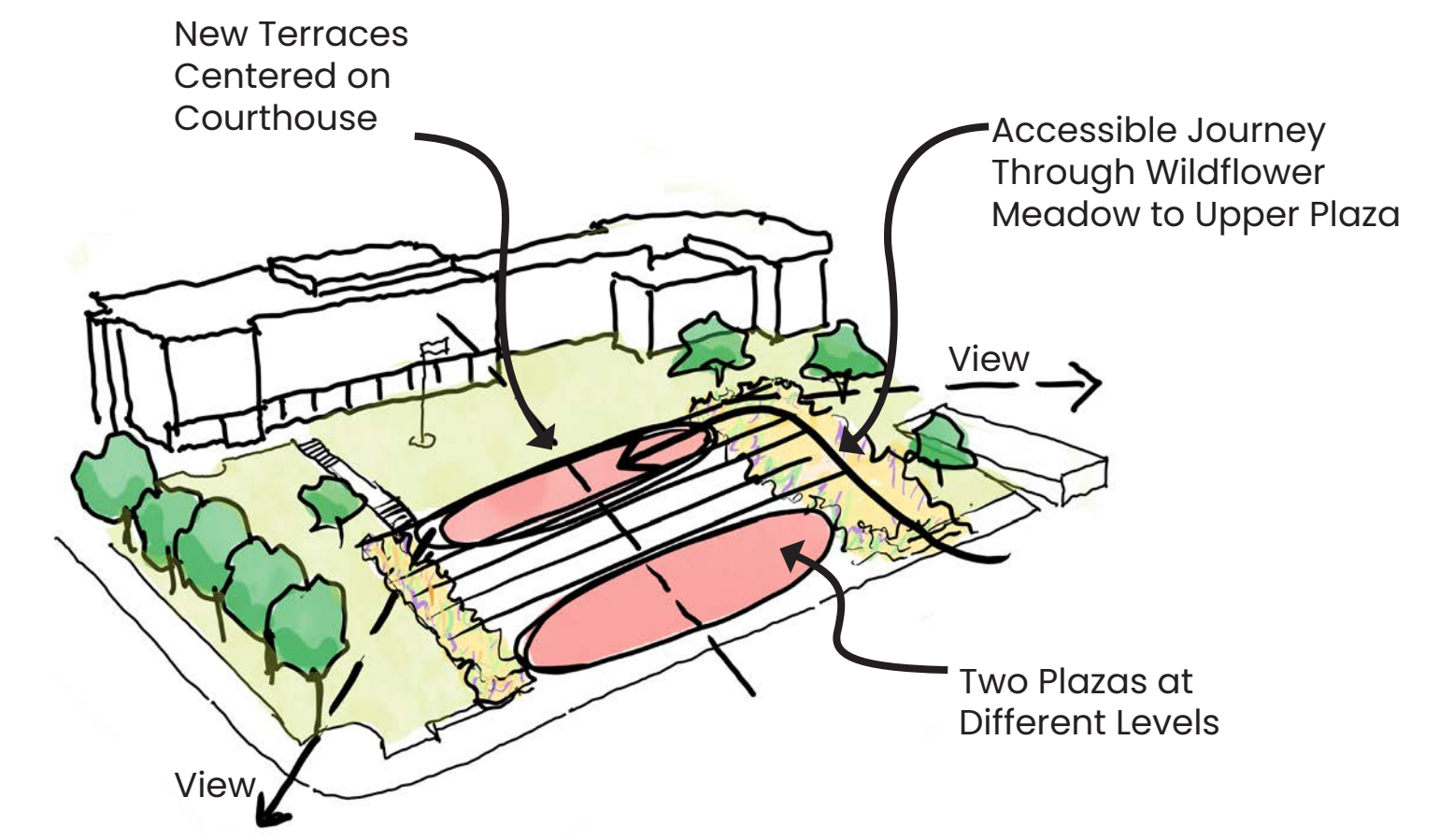
## Community Porches

The Community Porches concept has three small gathering plazas at different levels to offer expanding views as people move up the slope. The street level plaza has local downtown views and the upper plazas reveal longer views of the Gorge. Everyone can access the plazas through an accessible walkway that winds through a native meadow that references the wildflower meadows throughout the Gorge. Amphitheater seating steps are set into the meadow adjacent to the street-level plaza. This option preserves the existing stair to the courthouse and centers the plaza in the space east of the stair. The water feature in the street-level plaza can be turned off to host a small tented event or to create space for a small performance stage at the base of the amphitheater steps.



## Community Terraces

The Community Terraces concept has two generously scaled plazas: one large plaza at street level and a smaller plaza up the hill with views of the Gorge. The plazas are connected by a series of wide amphitheater terraces that are nestled into a native wildflower meadow. This option centers the plaza in the Courthouse lawn and integrates the existing stair into the new terraces. An accessible walkway travels through the Gorge-inspired native wildflower meadow to give everyone access to the highest view terrace. The water feature in the street-level plaza can be turned off to host a large tented market-type event or to create space for a stage and seating for a large performance event.



We want to hear from you!



Scan the QR code or visit:  
[www.ci.stevenson.wa.us/planning/project/park-plaza](http://www.ci.stevenson.wa.us/planning/project/park-plaza)

Survey will be live from December 1st - December 14



understory